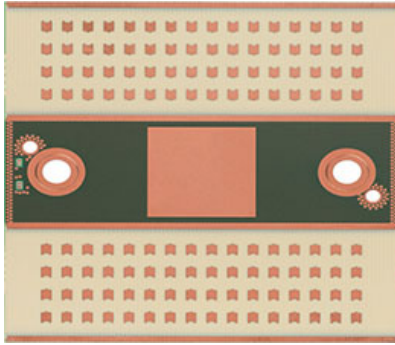


Design your own WiGig beam steering Gigabit link using the Evaluation Kit!



The RF Module Evaluation Kit, EVK 06002/00, is a "plug and play" platform, including also a patch antenna used for evaluating the latest Sivers IMA IEEE 802.11ad beam steering Transceiver RFIC. The Evaluation Kit is designed for ease of use and target system integrators and RF engineers validating the RF portion of a WiGig link.

The EVK 06002/00 is designed for seamless operation together with the IDT modem IC RWM6050, but can also operate together with other baseband solutions. In those cases some adaptations may be necessary depending on the functionality and characteristics of the baseband solution. Please contact your Sivers IMA sales representative for more information.

The Evaluation Kit include everything needed for seamless operation and will enable the user to quickly validate beam steering capabilities together with other system defining RF parameters, which are critical when developing a new product with tough requirements on time to market.

Benefits

- A solution for quick validation and proof of concept
- Plug and Play with a minimum of configuration activities
- Easy control of the Evaluation Kit through the USB interface
- User guideline included in the delivery
- Configuration support included



Features

- Coverage of 57-71 GHz (including the extended 64-71 GHz band in the US)
- Include RF Module, Mother Board and Graphical User Interface (GUI)
- Beam steering with Integrated patch array antenna
- Integrated synthesizer with support for up to 64 QAM modulation.
- Support for full RF channels according to IEEE802.11ad standard
- Additional support for fractional RF channels (1/2 and 1/4 channels)
- TX/RX LO frequency control
- Integrated Beam book for beam steering settings

**YOUR PARTNER FOR ADVANCED
mmWAVE & MICROWAVE SOLUTIONS**

SIVERSIMA
www.siversima.com