

Wide Band VCO

8.4 to 13.5 GHz

Electrical specification

| Type number | VO3280X/00 | | |
|---------------------------------|------------|------------|------------------|
| Package | Drop in | | |
| Parameter | Min. | Max. | Unit |
| Frequency range* | 8.4 | 13.5 | GHz |
| Output power, over all* | 14 | 19 | dBm |
| Power vs. frequency* | | 4 | dB |
| Power vs. temperature* | | 2 | dB |
| Temperature drift * | | 3 | MHz/°C |
| 2:nd harmonic | | - 20 | dBc |
| Spurious | | - 60 | dBc |
| FM noise* (SSB) 100 kHz 1MHz | | -65 -95 | dBc/Hz dBc/Hz |
| Tuning voltage* | 0 | +20 | V |
| Tuning sensitivity* | 100 | 600 | MHz/V |
| Non-linearity | | ±10 | % |
| Pulling, VSWR 1.5:1 | | ±2 | MHz |
| Pushing 11.5-12.5 V | | 1 | MHz/V |
| Slew rate | 20 | | GHz/μs |
| Modulation bandwidth | 10 | | MHz |
| PTD 1μs to 1s after freq. jump | | ±25 | MHz |

$T_a = 25^\circ\text{C}$, unless otherwise stated.



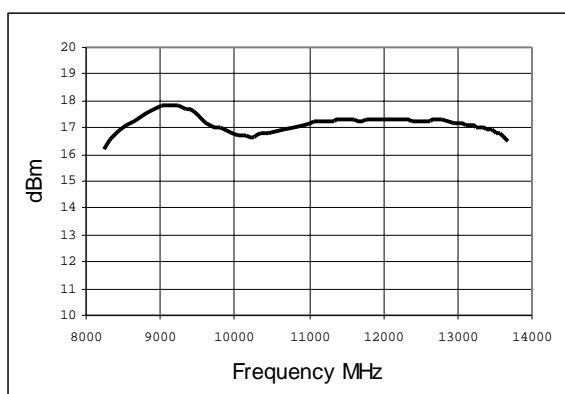
Dimensions
20.7×14.1×2.5mm

Note:
* 100% tested and guaranteed values. Other data are indicative

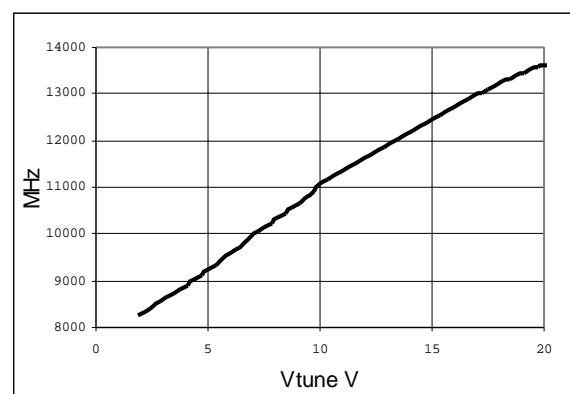
Interface/environmental specification

| Parameter | Min. | Max. | Unit |
|-------------------------------|------|------|------|
| Bias voltage | 11 | 16 | V |
| Bias current | | 250 | mA |
| Tuning voltage (damage level) | | 21 | V |
| Operating temperature | 0 | +60 | °C |
| Storage temperature | -50 | +100 | °C |

Typical Pout vs. frequency



Typical frequency vs. Vtune

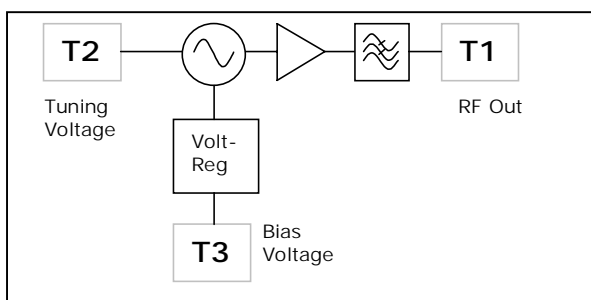


Data subject to change without notice. Rev.B 2006-11-28

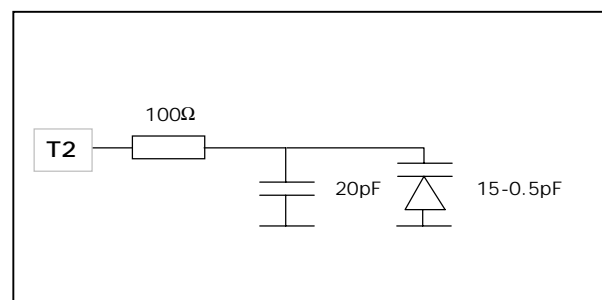
Wide Band VCO

8.4 to 13.5 GHz

Simplified block diagram



Tuning input interface



Data subject to change without notice. Rev.B 2006-11-28